

LUBATEX ECS

(GOTS approved)

For crease free
treatment of
cellulosic fabrics

The Anticrease agent **LUBATEX ECS**, used for:

- cotton
- viscose and other cellulosic fibres (Modal, Lyocell, Bamboo)
- blends of cellulosic fibres with polyester or polyamide
- pretreatment, dyeing and soaping processes

Properties of **LUBATEX ECS** :

- no negative influence on dispersing behaviour of dyes
- no retarding effect
- foamless
- shear-stable
- resistant to acids, alkalis and salt



ZSCHIMMER & SCHWARZ
MOHSDORF GmbH & Co KG

Burgstaedt, **GERMANY**

<http://www.zsm.de>

textil@zschimmer-schwarz.com

LUBATEX ECS has excellent antcrease behavior
→ prevents crease marks



no antcrease agent



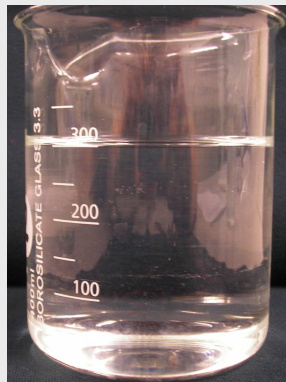
with LUBATEX ECS

LUBATEX ECS has perfect acid, alkaline and salt stability
→ usable in all treatment processes

Test: liquor stability of 3 g/l LUBATEX ECS



Demineralisation
(pH 3)



Bleaching with caustic
soda and peroxide



Reactive dyeing with
caustic soda and salt

LUBATEX ECS has no negative influence on the dispersing
properties of reactive dyes
→ no dyestuff agglomeration

Test: influence on dispersing properties in reactive dyeing with C.I. Reactive Blue 21



3 g/l LUBATEX ECS



3 g/l Competitor's product L