



# SETAVIN SU-E

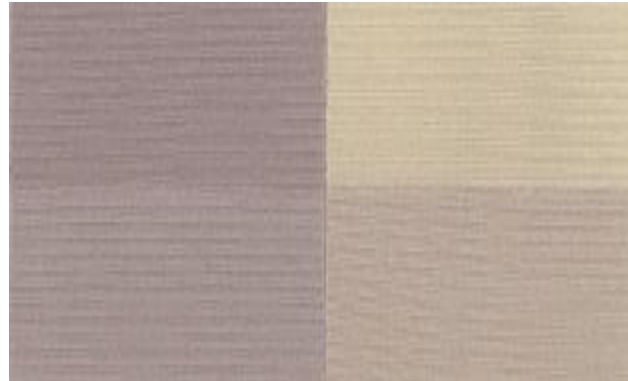
Special levelling agent for dyeing of polyester and blends with elastane

## Migration properties of SETAVIN SU-E

**Predyeing:** disperse dyestuff  
trichromie  
130°C 45 min, pH 5

**Migration:** use same quantities  
of undyed and dyed  
PES material  
dye 125°C 30 min  
without/with levellers  
check migration

Migration on pre-dyed fabric to greige fabric



Without leveller

SETAVIN SU-E

## Shade build up on PES dyeings of very high density material (zippers) trichromie with disperse „rapid dyers“

70°C    80°C    90°C    100°C    110°C    130°C    130°C 15'

standard leveller

red goes first, yellow and blue jumps

SETAVIN SU-E

even shade build up



- diffusion accelerating effect resulting in a optimal dyestuff yield
- improves migration of the disperse dyestuff
- reduces bariness during dyeing of microfibres
- specific application fields are:

dyeing of pressed yarn packages  
 dyeing of densely woven material and microfibre articles  
 dyeing of sewing threads and zippers  
 dyeing of polyester/elastane blends

